



関西学院大学
KWANSEI GAKUIN UNIVERSITY

なんでやねん!!

おはよう

日本

ありがとう

こんにちは

KWANSEI GAKUIN UNIVERSITY



Contemporary Japan Program

現代日本プログラム

2026-2027

まいど

おあきに

ちやうねん

めっちゃ
かも3い!

しらんけど



Learn about Japan and experience
Japan's culture with KGU

About Kwansei Gakuin



Kwansei Gakuin was founded in Kobe, Japan in 1889 by American missionary Reverend Walter Russell Lambuth.

With the aim to educate young minds based on Christian principles, Kwansei Gakuin has since grown into a leading private comprehensive and integrated educational institution consisting of a university, junior college, junior and senior high school, elementary school, kindergarten and international schools. Now residing in 8 campuses, including Nishinomiya, Sanda, Takarazuka, Osaka, and Tokyo, Kwansei Gakuin values inclusiveness for students from all backgrounds.



Mastery for Service

'Mastery for Service', Kwansei Gakuin's school motto, reflects the ideal for all its members to master their abundant God-given gifts to serve their neighbors, society and the world.

"To be a man, a master man and at the same time a true servant of humanity is our ideal."

Dr. C. J. L. Bates, the first president of Kwansei Gakuin University

The university

Kwansei Gakuin University (KGU) is an independent institution for higher education, offering Bachelor's, Master's, and Doctoral degrees in about 40 different disciplines to a student body of approximately 25,000.

Undergraduate Schools

Theology • Humanities • Sociology • Law and Politics • Economics • Business Administration • Policy Studies • Human Welfare Studies • Education • International Studies • Science • Engineering • Biological and Environmental Studies • Architecture

Graduate Schools

Theology • Humanities • Sociology • Law and Politics • Economics • Business Administration • Science and Technology • Policy Studies • Language, Communication and Culture • Human Welfare Studies • Education • International Studies

Professional Graduate Schools

Law School • Institute of Business and Accounting

Nishinomiya-Uegahara Campus

The Nishinomiya-Uegahara Campus, Kwansei Gakuin University's main campus, is located in Nishinomiya city's quiet residential area. The campus features Spanish Mission style buildings and an abundance of lush greenery. The beautiful landscape, which also includes a stream and pond, helps to contribute to this campus's reputation as one of the most beautiful in Japan. Kwansei Gakuin University is an ideal place for learning and everyday living.



Kwansei Gakuin University
at a Glance

1889

Founded in Kobe

More than 25,000
students



Location



Learn more about Hyogo prefecture ▶



Kansai Region

Kansai is Japan's second largest urban region following the Tokyo metropolitan area. The region includes Hyogo prefecture, where Kwansei Gakuin University is located, as well as the prefectures of Osaka, Kyoto, Nara, Shiga and Wakayama. Kansai is home to a number of ancient capitals, and rich in historic architecture and cultural assets designated as national treasures, making the region ideal for learning about Japanese culture.

Nishinomiya

Nishinomiya city is located in the south-east of Hyogo prefecture, from Osaka Gulf Coast on the south end to the north side of Mt. Rokko on the north end. It has a population of 480,000 and is therefore a suburban city by Japanese standards. It is located midway between Osaka and Kobe and has been developed as an "educational residential district" by taking advantage of the convenient location and rich natural environment.

Nishinomiya is home to the professional baseball team, Hanshin Tigers and to high school baseball players' sacred site, Hanshin Koshien Stadium. Nishinomiya is also famous for its sake brewery district and many cake factories.

Kobe

Located a short train ride from KGU's main campus, Kobe city is renowned as a modern and sophisticated city in Western Japan where various cultures blended to create a unique atmosphere. Historically, the city opened to the world as an international port in 1868, following the lifting of Japan's nearly 230-year-long isolation policy. Merchants and traders from around the world have chosen to base their operations in the city, which now is home to a large number of foreign residents, living side-by-side with Japanese in mutual respect. Thanks to this somewhat unexpected melting pot, Kobe is especially open to various faiths; Christian churches, Jewish synagogues, and Muslim mosques can all be found in Kobe.

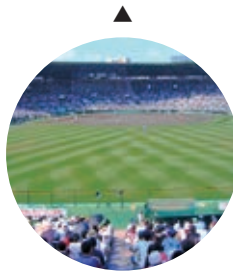
Takarazuka

Takarazuka city is adjacent to the north of Nishinomiya city, and some of KGU's dormitories. Mukogawa River runs through the center of the city, and beside the river, Takarazuka Hot Spring resort offers relaxation for both residents and visitors. The city's best renowned attraction is the Takarazuka Revue, a performing theater company with all-female casts. As they bring large crowds to the city and their performance has a reputation second to none, the name Takarazuka is widely known throughout Japan with international fans as well.

Local touristic attractions

Koshien Stadium

Koshien Stadium is the iconic home of the Hanshin Tigers, one of Japan's oldest and most beloved professional baseball teams. It is also the venue for the National Collegiate American Football Championship, the Koshien Bowl, where the KGU American Football Club has achieved a record 34 championship titles, making them the most successful team in the bowl's history.



Nishinomiya Jinja Shrine

The Nishinomiya Jinja Shrine is the head shrine of the Ebisu sect of Shinto. The Ebisu festival is celebrated every January and the "Lucky Man Race", in which participants race to the main shrine and the first three persons to reach it are named the "Luckiest Men of the year", is its main attraction.

Takarazuka Revue

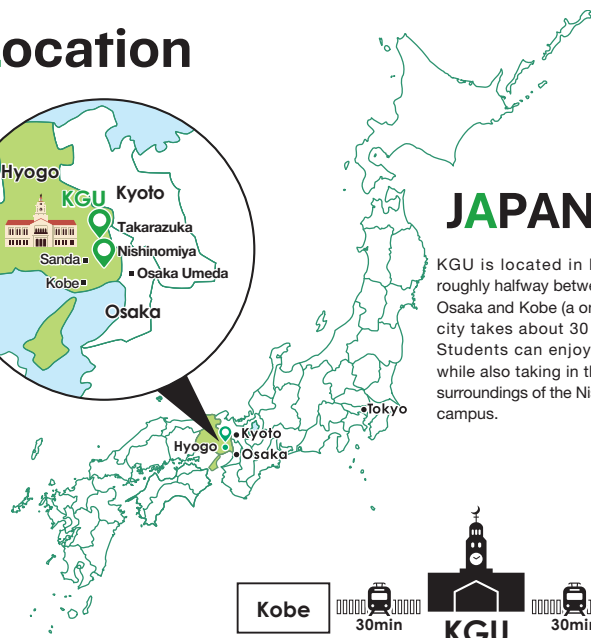
The Takarazuka Revue was founded in 1913 by Hankyu Railway founder Ichizo Kobayashi in order to attract passengers. It is a unique theatrical company as all its members are single women. They take pride in its long history, and enthusiastic supporters and patrons come to watch the show from across the country.



Kobe Beef

Kobe Beef is a prized Japanese delicacy and probably the most widely-known regional specialty food in Japan. Many steak restaurants offering tenderloin cooked in teppanyaki style can be found around Sannomiya Station.

Location



JAPAN

KGU is located in Nishinomiya city, roughly halfway between the two cities of Osaka and Kobe (a one-way trip to either city takes about 30 minutes by train). Students can enjoy this convenience while also taking in the beautiful natural surroundings of the Nishinomiya Uegahara campus.

14

undergraduate schools

14

graduate and professional
graduate schools

Over 320

partner institutions worldwide

Over 1,400

international students



Contemporary Japan Program

Overview

The Contemporary Japan Program is specially designed for incoming exchange students. Exchange students are offered a choice between two study tracks, the “Japanese Language Track” and the “Modern Japan Track” that will define the main focus of their time at KGU. Exchange students can also select elective courses to learn more about “contemporary Japan” from a variety of aspects such as language, culture, society, economy, and politics.

Feature

01

Two study tracks

For students who want to focus on language studies:

Japanese Language Track

Exchange students enrolled in the Japanese Language Track will primarily study the Japanese language in an intensive environment.

For curriculum details see ➡ p.06

For students who want to learn more about Japan in English:

Modern Japan Track

Exchange students enrolled in the Modern Japan Track will primarily focus on studying and understanding Japan through the mandatory Modern Japan Seminar taught in English.

For curriculum details see ➡ p.06

Feature

02

Wide variety of elective courses

KGU has a large range of elective courses taught in Japanese and English for students to choose from.

Taught in Japanese

Elective Japanese Language Courses

A full selection of elective Japanese language courses allows exchange students to improve the four skills essential to communication: reading, writing, listening, and speaking.

For course details see ➡ p.09

Intercultural Collaborative Learning Courses

Exchange students can enhance their understanding of intercultural issues in a classroom setting together with KGU students.

For course details see ➡ p.09

Taught in English

Depending on the student’s purpose for studying abroad and their major, they can choose what they want to study from around 200 courses in four fields.

Offered by other Undergraduate and Graduate Schools of KGU.

① Elective Japan Studies Courses ② Other Elective Courses

Business and Society

Different business fields and social issues such as SDGs

Language and Communication

Linguistics, culture, and cross-cultural communication centered on Japanese

Media and Culture

Japanese traditions, food culture, and pop/subculture that are unique to the world

Politics and History

The relationship between Japan and other countries, Japan’s history, religion, and legal system



Collaborative study with Japanese students

For course details see ➡ p.10~12



Participants' Voices

What stops you from filling out the KGU exchange program application form? Our alumni shared their stories and experiences to remove your barriers and help you make the big decision to study abroad at KGU.

Hearing from past students can help you imagine what your own experience at KGU might be like.

Japanese Language Track

Elshanni

Heinrich Heine University
Dusseldorf
Germany



"After spending one year at KGU, I can proudly say that the Contemporary Japan Program I participated in has shown itself to be the best decision of my life. Because of my Japanese studies at my home university in Germany, I chose the Japanese Language Track and it helped improve my Japanese fluency immensely. Teachers were focused on each student's needs and I really appreciated the numerous discussions and presentations we held in class. Through those courses, I realized that Japanese was more than just learning from a book and learned to express myself and make presentations in a foreign language. I made friends with many other exchange students and with my Japanese teachers, with whom I still keep in touch to this day. The relationship between the university's staff and the students is very cordial and it helped me a lot growing professionally and personally. For everybody out there who is thinking about an exchange year at KGU and the Japanese Language Track, the more effort you invest into your studies, the more you will get back. So at least do your homework and I am sure you will not regret your stay at Kwansei Gakuin University."

Modern Japan Track

Raya

Ateneo de Manila University
Philippines



"I chose the Modern Japan Track for two reasons: the first was because a lot of my classes could be credited for my majors back home in the Philippines, and the second is my genuine interest in Japanese culture and society. During my time in KGU, I learned a lot about the psyche behind phenomena that are special to Japanese society – I learned about hikikomori (modern hermits) and otaku (hardcore anime and manga fans), Japanese food culture, their special legal system, and so much more. I thought I was knowledgeable on Japanese culture and society to begin with, but after taking all these classes I learned that I was merely only scratching the surface of it all. My advice to prospective students is to do your research; there is a class for everything regarding Japan at KGU. Just make sure that you read up on the class descriptions to make sure the coverage of the class is something you really want to study. Moreover, don't worry about the workload. Classes are only once a week, with a very manageable workload that is designed to help you maximize your learning on the topic."






Explore more CJP student stories online






Two Paths, One Program

Japanese Language Track

-  Daily Japanese classes
-  Fixed core + electives
-  Focus on fluency

Modern Japan Track

-  English-taught courses on Japan
-  Flexible schedule, choose topics
-  Focus on cultural insight

Both tracks let you combine electives depending on interest, Japanese level and study level (undergraduate or graduate). Take the self-check quiz on the next page to see which suits you best.



Which Study Track Fits You Best?



Take this short self-check.
There are no wrong answers, only better fits.

#	Question	A	B
1	My main goal in Japan is...	<input type="checkbox"/> Improve my Japanese every day	<input type="checkbox"/> Learn about Japan in English
2	I prefer classes that are...	<input type="checkbox"/> Language-focused and interactive	<input type="checkbox"/> Lecture-based and analytical
3	I feel most comfortable when...	<input type="checkbox"/> I follow a set routine	<input type="checkbox"/> I build my own schedule
4	I want to...	<input type="checkbox"/> Master Japanese and pass JLPT	<input type="checkbox"/> Explore society and culture
5	My study style is...	<input type="checkbox"/> Structured and guided	<input type="checkbox"/> Independent and flexible
6	I'm looking for classes that...	<input type="checkbox"/> Meet daily and connect across skills	<input type="checkbox"/> Stand alone and match my interests

After counting your A's and B's, check your result below.

Mostly A Japanese Language Track (JLT)

You're here to study Japanese, and JLT gives you the structure to succeed. You'll join a mandatory core package of language classes that meet daily and build all four skills, grammar, speaking, listening, and writing, in a connected way.

- ✓ **What to expect:** Daily classes, steady progress, and a tight learning community.
- ✓ **Great for:** Serious learners aiming for fluency or JLPT certification.
- ✓ **Heads-up:** Full schedule, daily homework, but highly rewarding. / You can still take elective courses in English, including business, culture, and more.

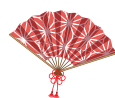
Mostly B Modern Japan Track (MJT)

You're here to explore Japan through English-taught courses while learning Japanese at your own pace. You'll take the *Modern Japan Seminar* once a week, then build your own schedule from 100+ electives in culture, society, business, and more.

- ✓ **What to expect:** Flexibility, academic variety, and independence.
- ✓ **Great for:** Students who enjoy self-directed study and diverse interests.
- ✓ **Heads-up:** Language electives are available but progress may feel slower or less structured than in JLT.



Course Model at a Glance



See sample timetable online



Japanese Language Track (JLT)

Students will be enrolled in mandatory Japanese Language Courses (JLC) according to their Japanese level and will attend their courses five times per week. In addition to their mandatory JLC, students will be required to enroll and attend a number of elective courses.

Mandatory Course

Mandatory Japanese Language Courses focus on developing the students' four basic language skills: reading, writing, listening and speaking by grouping students with a similar Japanese language level.

Course Registration Model for JLT Students

Mandatory (5 classes per week)	Elective (at least 2 classes per week)
<ul style="list-style-type: none"> • Mandatory Japanese Language Courses (JLC) 	<ul style="list-style-type: none"> • Elective Japanese Language Courses (JLC) • Elective Japan Studies Courses (JSC) • Elective Intercultural Collaborative Learning Courses (ICLC) • Other Elective Courses

Language Requirements

- **Japanese Language Requirement:** Prospective exchange students must at least be able to fluently read, write and pronounce the Japanese Hiragana and Katakana phonetic scripts by the Japanese Placement Test.
- **English Language Requirement:** As a number of elective courses are taught in English, exchange students whose native language is not English are expected to have an English proficiency equivalent to a TOEFL iBT® score of 71 or higher. Students are not required to submit a certificate for English proficiency.



Modern Japan Track (MJT)

Students will be enrolled in a mandatory Modern Japan Seminar according to availability and will attend their designated course once a week. In addition to their mandatory Modern Japan Seminar, students will be required to enroll and attend a number of elective courses.

Mandatory Course

The Modern Japan Seminar is held once a week and will focus on studying and understanding Japan from various viewpoints through a seminar-style English medium class.

Course Registration Model for MJT Students

Mandatory (1 class per week)	Elective (at least 6 classes per week)
<ul style="list-style-type: none"> • JSC Modern Japan Seminar 	<ul style="list-style-type: none"> • Elective Japan Studies Courses (JSC) • Elective Japanese Language Courses (JLC) • Elective Intercultural Collaborative Learning Courses (ICLC) • Other Elective Courses

Language Requirements

- **Japanese Language Requirement:** N/A
- **English Language Requirement:** As a number of elective courses are taught in English, exchange students whose native language is not English are expected to have an English proficiency equivalent to a TOEFL iBT® score of 71 or higher. Students are not required to submit a certificate for English proficiency.



For Students with a Strong Command of the Japanese Language

(Regular University Courses)



Eligibility

An extremely high level of Japanese language ability is required in order to take Regular University Courses taught in Japanese. Exchange students who meet one of the requirements below are eligible to register for Regular University Courses:

- Submit proof of having passed the Japanese Language Proficiency Test (JLPT) N1 before the beginning of the semester.
- Receive a score of Level 8 in the Japanese Placement Test before the beginning of the semester.

Undergraduate students can only take courses offered at the undergraduate level. Graduate students can only take courses offered at the graduate level.

Mandatory Japanese Courses

In principle, students placed at Level 8 based on the Japanese Placement Test are required to register for and attend Academic Japanese (Level 8).

- ※1 Students who hold JLPT N1 but are placed below Level 8 based on the Japanese Placement Test may be required to follow a different set of mandatory courses.
 ※2 MJT students will also be required to attend the JSC Modern Japan Seminar.

Course Registration Model for JLT students eligible to register for Regular University Courses

Mandatory (2 classes per week)	Elective (at least 5 classes per week)
<ul style="list-style-type: none"> • Academic Japanese (Level 8) (taught in Japanese) ※1 	<ul style="list-style-type: none"> • Regular University Courses (taught in Japanese) • Elective Japan Studies Courses (JSC) • Elective Japanese Language Courses (JLC) • Elective Intercultural Collaborative Learning Courses (ICLC) • Other Elective Courses

Course Registration Model for MJT students eligible to register for Regular University Courses

Mandatory (3 classes per week)	Elective (at least 4 classes per week)
<ul style="list-style-type: none"> • Academic Japanese (Level 8) (taught in Japanese) • JSC Modern Japan Seminar (taught in English)※2 	<ul style="list-style-type: none"> • Regular University Courses (taught in Japanese) • Elective Japan Studies Courses (JSC) • Elective Japanese Language Courses (JLC) • Elective Intercultural Collaborative Learning Courses (ICLC) • Other Elective Courses

Japanese Levels at KGU

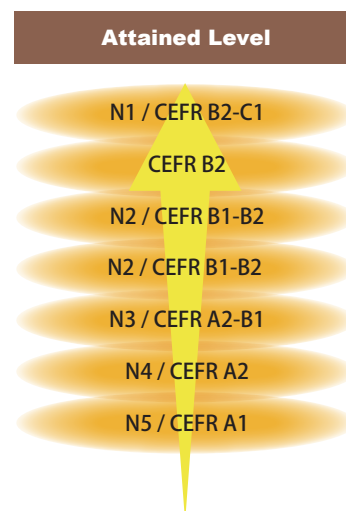


At KGU, Japanese language courses are offered at eight levels, from Level 1 (beginner/low) to Level 8 (proficient). Your level will be decided based on a placement test before the semester begins.

This level determines:

- ▶ Which core package of Japanese Language Courses you will be registered for (if you choose JLT)
- ▶ Which electives Japanese Language Courses/Intercultural Collaborative Learning Courses you can register for (all study tracks)
- ▶ Which general electives taught in Japanese may be available to you (all study tracks)

Level at KGU	Level Description
Level 8 ▶	Proficient
Level 7 ▶	Advanced (High)
Level 6 ▶	Advanced (Low)
Level 5 ▶	Intermediate (High)
Level 4 ▶	Intermediate (Low)
Level 3 ▶	Pre-Intermediate
Level 2 ▶	Beginner (High)
Level 1 ▶	Beginner (Low)



※CEFR=Common European Framework of Reference for Languages

※N1-N5= JLPT (Japanese Language Proficiency Test)



Academic Affairs


Course Load

Exchange students must register for and attend at least 7 classes per week.

Credits

KGU requires degree seeking students to take 124 KGU credits over the course of a 4 year undergraduate program in order to graduate.

While it is recommended that students register for no more than 16 KGU credits (a full load for a KGU degree seeking student), one can register for up to 24 KGU credits per semester. Credit requirements and transfers are left to the discretion of the student's home university. Students should make sure to check with their home university about modalities.

Course credits are calculated using the following guidelines: 

1 KGU Credit Hour (Actual Teaching Hours)	
Language Courses ▶	22.5 hours
Lectures & Seminars ▶	11.25 hours

Course Evaluation Method

The evaluation method will vary depending on courses and students should make sure to check the online syllabus for each courses they are interested in.

Final examinations for courses listed under Japanese Language Courses, Japan Studies Courses and Intercultural Collaborative Learning Courses (p.09-10) will be held by the end of classes. Final examinations for courses listed under Other Elective Courses (p.11-12) may be held during the Final Examination Period.

➡ see back cover for details about dates

Grading System and Policies

A student enrolled in a course is generally evaluated based on a comprehensive review of scores on examinations, performance in class, attendance, and other factors.

The grading system at KGU is divided into eight grades from "S" to "F." Grades from "S" to "C" are passing grades. "F" is a failing grade.

Letter Grade		Score	GPA	Meaning
S	▶	90 and above	4.0	Pass
A+	▶	85 - 89	3.5	
A	▶	80 - 84	3.0	
B+	▶	75 - 79	2.5	
B	▶	70 - 74	2.0	
C+	▶	65 - 69	1.5	
C	▶	60 - 64	1.0	Fail
F	▶	0 - 59	0	

※Other possible grades include P: (Pass)

Course Numbering

Course Numbering and Course Code are different and should not be mistaken for one another.

While a Course Code identifies a specific course, Course Numbering shows the level of each course and can be found in the Course Number field using the KGU Syllabus Online Tool (Ex. [Course Number] Class Title). See p.09 for details on how to access the KGU Syllabus Online Tool.

Course Numbering System

Undergraduate Level Courses ▶	100-299 : Lower division courses primarily for 1st year and 2nd year	100-199 : Introductory undergraduate courses
		200-299 : Intermediate level undergraduate courses
	300-499 : Upper division courses primarily for 3rd year and 4th year	300-399 : Advanced intermediate level undergraduate courses
		400-499 : Advanced level undergraduate courses
Graduate Level Courses ▶	500-699 : Graduate courses	
	700-899 : Graduate courses limited to doctoral students	



Course List

- Available courses are subject to change. Courses for the 2026 Fall Semester will be finalized in March 2026, and courses for the 2027 Spring Semester will be finalized in March 2027.
- You can find the details of courses on the online syllabus at the following URL: <https://syllabus.kwansei.ac.jp/>
- The course code or course name is required when searching the syllabus.



Japanese Language Courses (JLC)

Subject to change

Offered in Japanese

Course Code	Course Name	Credits	Course Code	Course Name	Credits
Mandatory Courses (Japanese Language Track Only)					
515305▶	JLC Intensive Japanese (Level 1)	5	515405▶	JLC Speaking and Listening (Level 5)	2
515325▶	JLC Intensive Japanese (Level 2)	5	515425▶	JLC Intensive Japanese (Level 6)	3
515345▶	JLC Intensive Japanese (Level 3)	5	515435▶	JLC Research and Report (Level 6)	2
515365▶	JLC Intensive Japanese (Level 4)	3	515455▶	JLC Intensive Japanese (Level 7)	3
515375▶	JLC Speaking and Listening (Level 4)	2	515465▶	JLC Research and Report (Level 7)	2
515395▶	JLC Intensive Japanese (Level 5)	3	515685▶	JLC Academic Japanese (Level 8)	2
Elective Courses (Both Tracks)					
515485▶	JLC Regular (Level 1A) For MJT Only	2	515555▶	JLC Japanese Usage (Level 4-7)	1
515495▶	JLC Regular (Level 1B) For MJT Only	1	515545▶	JLC Japanese Usage (Level 5-8)	1
515505▶	JLC Regular (Level 2) For MJT Only	3	515595▶	JLC Writing (Level 2-3)	1
515315▶	JLC Kanji and Vocabulary (Level 1)	1	515585▶	JLC Writing (Level 4-7)	1
515335▶	JLC Kanji and Vocabulary (Level 2)	1	515575▶	JLC Writing (Level 5-8)	1
515355▶	JLC Kanji and Vocabulary (Level 3)	1	515615▶	JLC Listening (Level 4-7)	1
515385▶	JLC Kanji and Vocabulary (Level 4)	1	515605▶	JLC Listening (Level 5-8)	1
515415▶	JLC Kanji and Vocabulary (Level 5)	1	515645▶	JLC Speaking (Level 1-2)	1
515445▶	JLC Kanji and Vocabulary (Level 6)	1	515642▶	JLC Speaking (Level 2-3)	1
515475▶	JLC Kanji and Vocabulary (Level 7)	1	515635▶	JLC Speaking (Level 4-5)	1
515535▶	JLC Japanese Culture (Level 1-4)	1	515625▶	JLC Speaking (Level 6-8)	1
515525▶	JLC Japanese Culture (Level 5-8)	1	515675▶	JLC Reading (Level 3-4)	1
515565▶	JLC Japanese Usage (Level 1-2)	1	515655▶	JLC Reading (Level 5-8A)	1
515562▶	JLC Japanese Usage (Level 3-5)	1	515665▶	JLC Reading (Level 5-8B)	1

Intercultural Collaborative Learning Courses (ICLC)

Subject to change

Fall Semester

Language varies by course

Spring Semester

Language varies by course

Course Code	Course Name	Credits	Course Code	Course Name	Credits
460070▶	ICLC Language Use and Language Policy in Multilingual Societies	2	460030▶	ICLC Building a Sustainable Society	2
460100▶	ICLC My Actions on Creating a Well-being Society	2	460050▶	ICLC Psychological Science in the Age of Globalization	2
460110▶	ICLC Introductory Seminar on Supporting Linguistic Minorities	2	460060▶	ICLC World Englishes	2
460130▶	ICLC Voices beyond KG: Listening to Voices Sharing Stories	2	460120▶	ICLC Voices from KG: Knowing Others Discovering Myself	2
451285▶	Multicultural Collaboration in English	2	460140▶	ICLC Multiculturalism and Immigration in Canada	2
※These courses are subject to enrollment limits and Japanese language requirements.			451285▶	Multicultural Collaboration in English	2

Canadian Studies

Subject to change

Fall Semester

Offered in English

Spring Semester

Offered in English

Course Code	Course Name	Credits	Course Code	Course Name	Credits
499142▶	Topics in Canadian Studies C	2	499140▶	Topics in Canadian Studies A	2
499143▶	Topics in Canadian Studies D	2	499141▶	Topics in Canadian Studies B	2



Japan Studies Courses (JSC)

Fall Semester

Offered in English

Category	Course Code	Course Name	Credits
Mandatory Courses (Modern Japan Track Only)			
—	466620	JSC Modern Japan Seminar A	2
Elective Courses (Both Tracks)			
Business and Society	464600	JSC Introductory Japanese Finance	2
	464610	JSC Marketing in Japan	2
	464690	JSC Japanese Business B	2
	464720	JSC HR Management and Employment	2
	464760	JSC Global Leadership	2
Language and Communication	464800	JSC Business and Accounting Simulation Game using LEGO	2
	466010	JSC Japanese Linguistics	2
	466022	JSC The Study of Intercultural Communication B	2
Media and Culture	464000	JSC Traditional Japanese Beauty	2
	464020	JSC Comparative Cultural Studies A	2
	464070	JSC Japanese Art A	2
	464111	JSC Japanese Pop Culture A	2
	464120	JSC Japanese Food Culture	2
	464140	JSC Japanese Cinema A	2
	465040	JSC Japanese Psychology A	2
	465560	JSC Japanese Literature A	2
Politics and History	465060	JSC Japanese History A	2
	465090	JSC The Japanese Legal System	2
	465620	JSC Minorities in Japanese Society	2
	465630	JSC Political Economy of Japan	2
	465640	JSC Japan's Foreign Relations	2
	465660	JSC Japan-China Relations	2
	465670	JSC Government and Politics in Japan A	2



Winter Intensive Period (WIP)

Cross Cultural Studies Courses

Offered in English

Course Code	Course Name	Credits
499310	CCC Introduction to International Relations	2

Japan Studies Courses

Offered in Japanese

Course Code	Course Name	Credits
464630	JSC Internship ※Japanese Level 7 or above	3

Spring Semester

Offered in English

Category	Course Code	Course Name	Credits
Mandatory Courses (Modern Japan Track Only)			
—	466300	JSC Modern Japan Seminar B	2
Elective Courses (Both Tracks)			
Business and Society	464620	JSC Innovation and Intrapreneurship	2
	464660	JSC Japanese Economy	2
	464680	JSC Japanese Business A	2
	464750	JSC Intercultural Competency in Business	2
	465150	JSC Global and Local Actions around the SDGs	2
Language and Communication	466015	JSC Language Use and Communication	2
	466030	JSC Pragmatics and Culture in Japan	2
	466060	JSC Language and Culture in Japan B	2
Media and Culture	464010	JSC Religious and Traditional Rites	2
	464030	JSC Comparative Cultural Studies B	2
	464060	JSC Traditional Japanese Theatre	2
	464080	JSC Japanese Art B	2
	464100	JSC Manga: A Cultural History	2
	464112	JSC Japanese Pop Culture B	2
	465050	JSC Japanese Psychology B	2
	465570	JSC Japanese Literature B	2
Politics and History	465030	JSC Environment Issues in Modern Japan	2
	465070	JSC Japanese History B	2
	465080	JSC Japanese Religion	2
	465100	JSC Japanese Society	2
	465650	JSC The Chinese in Modern Japan	2
	465680	JSC Government and Politics in Japan B	2
	465740	JSC Encounter between Japan and Korea	2
	466100	JSC Diversity and Inclusion	2



Japanese Language Courses

Offered in Japanese

Course Code	Course Name	Credits
Japanese Language Track Only		
515855	JLC Advanced Japanese Seminar (Level 6-8)	2
515860	JLC Project Work A (Level 1-3)	2
515890	JLC Project Work D (Level 4-8)	2



Other Elective Courses

Courses listed below are all worth 2 KGU credits. Courses listed below may have a final examination held during the Final Examination Period. Make sure to check the syllabus for details.

Subject to change

Courses Offered by Other KGU Undergraduate Schools <Undergraduate Only>

SIS School of International Studies SPS School of Policy Studies SHWS School of Human Welfare Studies SS School of Sociology

Fall Semester

Offered in English

Category	Course Code	Course Name	Credits	School
Business and Society	234350	Sociology in English B	2	SS
	234352	Sociology in English C	2	SS
	341640	Japanese Economy	2	SIS
	341665	Basic Management	2	SIS
	341680	Introduction to Quantitative Analysis	2	SIS
	342602	Management B	2	SIS
	342606	Microeconomics	2	SIS
	342608	Economic History of the European Union	2	SIS
	342615	International Human Resource Management	2	SIS
	343290	US Economy	2	SIS
	343330	International Management	2	SIS
	343332	International Trade and Asia-Pacific	2	SIS
	344450	Japanese Corporate Governance	2	SIS
	344662	The EU Economy	2	SIS
	344663	Economy and Religion in Europe	2	SIS
Language and Communication	294361	English Communication Topics B	2	SPS
	297167	Global Englishes	2	SPS
	341530	Introduction to Applied Linguistics	2	SIS
	342116	Bilingualism	2	SIS
Media and Culture	342239	Introduction to Intercultural Communication	2	SIS
	295752	Culture and Thought	2	SPS
	342238	Japanese Pop Culture B	2	SIS

Fall Semester

Offered in English

Category	Course Code	Course Name	Credits	School
Media and Culture	343090	Cultures in the USA	2	SIS
	344101	Religion and Society in the Contemporary World	2	SIS
	344131	Contemporary Chinese Society and Culture	2	SIS
	344160	Introduction to Japanese Literature	2	SIS
	344170	Introduction to Japanese Culture	2	SIS
Politics and History	293171	N.G.O.	2	SPS
	293661	Ecological Policy	2	SPS
	315341	Globalization and Social Welfare	2	SHWS
	341570	Japanese Politics and Diplomacy	2	SIS
	341580	Introduction to International Relations	2	SIS
	342191	Climate Justice	2	SIS
	342350	Global Governance	2	SIS
	342360	International Relations in Europe	2	SIS
	342365	Foreign Policy Analysis	2	SIS
	342423	The European Union: History, Politics & Economy	2	SIS
	342902	Topics in International Politics A (002)	2	SIS
	342952	Topics in International Politics B (002)	2	SIS
	343190	American Society	2	SIS
	343200	US Foreign Policy	2	SIS
	344310	Prewar Japanese Political History	2	SIS
	344330	Postwar Japanese Diplomatic History	2	SIS
	344331	Australian Politics	2	SIS

Spring Semester

Offered in English

Category	Course Code	Course Name	Credits	School
Business and Society	234348	Sociology in English A	2	SS
	294391	Studies in Multicultural Society	2	SPS
	297128	Basic Economics	2	SPS
	297242	International Trade	2	SPS
	341631	Introduction to Economics	2	SIS
	341660	Introduction to Financial Accounting	2	SIS
	341665	Basic Management	2	SIS
	342580	International Accounting	2	SIS
	342590	Financial Reporting and Analysis	2	SIS
	342592	Introduction to European Economic History	2	SIS
	342601	Management A	2	SIS
	342604	Development Economics	2	SIS
	342607	Macroeconomics	2	SIS
	343310	Human Resource Management in the USA	2	SIS
	343330	International Management	2	SIS
	343331	International Finance and Asia-Pacific	2	SIS
	344440	Japanese Financial Practices	2	SIS
	344661	Eastern European Economies	2	SIS

Spring Semester

Offered in English

Category	Course Code	Course Name	Credits	School
Language and Communication	294191	Intercultural Communication	2	SPS
	294211	English Linguistics	2	SPS
	294351	English Communication Topics A	2	SPS
	297166	Multilingualism and Multiculturalism	2	SPS
Media and Culture	292961	Comparative Culture	2	SPS
	294581	The Web & Society	2	SPS
	342237	Japanese Pop Culture A	2	SIS
	344111	Contemporary Japanese Society and Culture	2	SIS
Politics and History	344171	Changing Images of Women	2	SIS
	232774	Death, Dying, and Religion	2	SS
	297126	Global Environmental Policy	2	SPS
	341590	Introduction to Political Science	2	SIS
	341601	Introduction to International History	2	SIS
	341610	International Conflicts	2	SIS
	341620	Introduction to International Law	2	SIS
	342091	Japanese Religion	2	SIS
	342360	International Relations in Europe	2	SIS
	342361	International Relations of Japan	2	SIS



Spring Semester		Offered in English		
Category	Course Code	Course Name	Credits	School
Politics and History	342364▶	International Security	2	SIS
	342902▶	Topics in International Politics A (002)	2	SIS
	342952▶	Topics in International Politics B (002)	2	SIS
	343210▶	US-Japan Relations	2	SIS

Spring Semester		Offered in English		
Category	Course Code	Course Name	Credits	School
Politics and History	344290▶	Asia-Pacific Relations	2	SIS
	344301▶	Prewar Japanese Diplomatic History	2	SIS
	344320▶	Postwar Japanese Political History	2	SIS

Courses Offered by Graduate School of Policy Studies <Graduate Only>

※Due to the relatively small size of the Graduate School of Policy Studies, some courses may be cancelled after course registration is finalized if no degree-seeking students are enrolled.

※Prior academic experience in international cooperation, development or diplomacy is strongly recommended.

Fall Semester		Offered in English		
Course Code	Course Name	Credits		
760090▶	International Issues and Global Order	2		
760110▶	Research Project in the United Nations	2		

Spring Semester		Offered in English		
Course Code	Course Name	Credits		
760010▶	International Public Policy	2		
760030▶	Management of International Organizations	2		

Courses Offered by Institute of Business and Accounting (IBA) <Graduate Only>

※If demand exceeds capacity, enrollment may be limited.

Fall Semester		Offered in English		
Course Code	Course Name	Credits	Level	
973010▶	Business Ethics	2	C	
973020▶	Management	2	C	
973030▶	Accounting for Decision Making	2	C	
973050▶	Statistics	2	C	
973535▶	Designing Organizational Systems	2	B	
973545▶	International Management	2	B	
973555▶	Leadership and Corporate Renewal	2	B	
973565▶	Marketing Management	2	B	
973585▶	Principles of Finance	2	B	
973590▶	Corporate Finance	2	B	
973600▶	Financial Reporting and Analysis	2	B	
973605▶	Cost and Management Accounting	2	B	
974060▶	Marketing Research	2	A	
974075▶	Consumer Behavior	2	A	
974130▶	Financial Institutions Management	2	A	
974193▶	Accounting Theory and Practice	2	A	
974197▶	International Economic Integration	2	A	
974200▶	Management Information Systems	2	A	
974231▶	Family Business Management	2	A	
974233▶	Leadership Development: Mentoring for Business Succession	2	A	

Spring Semester		Offered in English		
Course Code	Course Name	Credits	Level	
973010▶	Business Ethics	2	C	
973020▶	Management	2	C	
973030▶	Accounting for Decision Making	2	C	
973050▶	Statistics	2	C	
973525▶	Corporate Strategy	2	B	
973545▶	International Management	2	B	
973565▶	Marketing Management	2	B	
973570▶	Marketing Strategy	2	B	
973585▶	Principles of Finance	2	B	
973590▶	Corporate Finance	2	B	
973600▶	Financial Reporting and Analysis	2	B	
974010▶	Technology Management	2	A	
974030▶	Cross-Cultural Management	2	A	
974040▶	Organizational Behavior	2	A	
974050▶	Human Resource Management	2	A	
974051▶	Business Negotiation	2	A	
974052▶	Information Management for Decision Making	2	A	
974055▶	New Global Venture Creation	2	A	
974100▶	Brand Management	2	A	
974165▶	Business Analytics	2	A	
974170▶	Corporate Restructuring	2	A	
974205▶	International Finance	2	A	
974234▶	Marketing and Sustainability	2	A	
974235▶	SME Finance	2	A	
974236▶	Sustainability Management & Accounting	2	A	
974260▶	Advanced Topics in Business C	2	A	
974270▶	Advanced Topics in Business D	2	A	
974280▶	Advanced Topics in Business E	2	A	



Institute of Business Accounting Courses Structure

- C Core Courses** ▶ Designed to provide the fundamental knowledge essential for studying business at the MBA level. It is recommended to take these courses first.
- B Basic Courses** ▶ Designed to provide the fundamental knowledge essential for each disciplinary subject, i.e. Marketing, Management, Finance and Accounting. They are recommended for those students who are interested in disciplinary subjects.
- A Advanced Courses** ▶ Intended for further development and expansion of knowledge and expertise in each disciplinary subject. These courses may require highly advanced knowledge and expertise.



Accommodation Information



Dormitory & Homestay

An incoming exchange student who qualifies for a KGU-arranged accommodation can apply for one of the two following options: Dormitory or Homestay. The Residence Center staff members will do their best to place all applicants in an accommodation of their preference.



For details ▶

Dormitory



Experience different cultures and build strong international friendships through living in a dormitory.

KGU places exchange students in various dormitories. The type of accommodation and location varies depending on the placement. Due to limited availability or duration of exchange, KGU may not be able to place students in their preferred dormitory.

All dormitories provide exchange students with their own private room.

The dormitory option is recommended for students who value personal space and independence.

※Remarks

Some of the dormitories have a bathroom and toilet inside the private room but most exchange students will have to share their bathroom, toilets and kitchen with other students.

What is provided in a private room ?

- Bedding, wardrobe, desk and chair
- Air-conditioner/heater ● Internet access



Homestay



Gain an invaluable understanding of the modern Japanese family through a homestay experience.

Staying with a host family is a very effective way to learn Japanese culture and language. Becoming part of a Japanese family can be an amazing experience. However, it also means living in close quarters with a Japanese family, respecting each other and making compromises.

The homestay option is recommended for students who are extremely motivated in using the Japanese language every day and are highly adaptable.

※Remarks

The number of host families willing to welcome a long term student is declining and in the last couple of years, KGU has had difficulties finding suitable homestay placements for all students. When matching a student with a family, KGU takes into account the language skills (Japanese), dietary and health needs, and personal preferences of the student as well as the preferences and availability of the host family. As it is a complex process, KGU sometimes may not find a match and redirect a student to a dormitory.

What is provided in a homestay ?

- Bedding, wardrobe, desk and chair
- Meals (two meals on weekdays, three meals on weekends and Japanese National Holidays)
- Internet access (high-speed may not be available)



Financial Information



Costs

While Tuition Fees are waived for exchange students at KGU, incoming exchange students must pay for the following items prior or during their exchange.

Program Fees (subject to change)

Program Fees include fees covering the purchase of the mandatory KGU Insurance Pack and KGU Support Pack.

	One Semester		Full-Year	
	Fall (Sep.–Jan.)	Spring (Mar.–Jul.)	From Fall (Sep.–Jul.)	From Spring (Mar.–Jan.)
Program Fees	▶ 40,000 JPY	40,000 JPY	55,000 JPY	55,000 JPY

All incoming students will be expected to complete full payment of the Program fees prior to the beginning of their program.

Accommodation Fees (subject to change)

Accommodation Fees include a range of items from rent to futon rental and will vary depending on the students' accommodation.

	One Semester		Full-Year	
	Fall (Sep.–Jan.)	Spring (Mar.–Jul.)	From Fall (Sep.–Jul.)	From Spring (Mar.–Jan.)
Dormitory Fees	▶ 260,000– 650,000 JPY	240,000– 600,000 JPY	530,000– 1,300,000 JPY	500,000– 1,250,000 JPY

※ Dormitory Fees will be charged monthly to the student after the beginning of the program.

	One Semester		Full-Year	
	Fall (Sep.–Jan.)	Spring (Mar.–Jul.)	From Fall (Sep.–Jul.)	From Spring (Mar.–Jan.)
Homestay Fees	▶ 500,000 JPY	400,000 JPY	1,000,000 JPY	900,000 JPY

※ One Semester Students will be expected to complete full payment of the Homestay Fees prior to the beginning of the program.
 ※ Full Year Students will be expected to complete payment of the first semester Homestay Fees prior to the beginning of the program and pay for the second semester Homestay Fees prior to the start of the second semester.

Living Expenses

Exchange students may find that they need more or less, but below is an estimate of what a student should plan for a one month period. Those planning trips during breaks, regular outings, shopping, or other personal plans should bring more.

The cost of a round-trip airfare to and from Japan or travel expenses for trips within Japan is not included below. Also, depending on where students are staying, transportation costs to and from the university may be required.

(Per month)

	Dormitory Student	Homestay Student
Health Insurance	▶ 3,000 JPY	3,000 JPY
Food	▶ 45,000 JPY	15,000 JPY
Books	▶ 7,000 JPY	7,000 JPY
Miscellaneous	▶ 15,000 JPY	20,000 JPY
TOTAL	▶ 70,000 JPY	55,000 JPY

Scholarship Opportunities

Applying for scholarships through KGU While KGU does not offer any unique scholarships for exchange students, we recommend students to apply to external organizations. Such scholarships depend on the external organization's budget and KGU cannot guarantee the number of scholarships we will be allocated. As a whole, the number of scholarships has decreased in recent years. Prospective exchange students are not to assume that they will receive a scholarship and should therefore plan their budget accordingly.

Monthly stipend	▶ 60,000 – 80,000 JPY
Eligibility	▶ A foreign national entering Japan with a student visa. Japanese nationals are not eligible.
Conditions	▶ A student who has demonstrated a history of academic excellence and requires financial support.
How to apply	▶ Scholarship application documents should be sent to KGU along with the CJP application documents. Prospective exchange students should discuss their eligibility with their study abroad advisor at their home institution.

Applying to scholarships on your own Past participants have received other scholarships through corporations, national governments, and non-governmental organizations. KGU will support applications to these scholarships, but the solicitation and application to the scholarship are the responsibility of the student.



Support on Campus



Everyday and Academic Life

Transition to life in Japan is probably not going to be as smooth as most expect and exchange students may face difficulties. But rest assured, KGU is proud of its support groups and organizations and takes great care of international students.

Center for International Education and Cooperation (CIEC)

CIEC is the central coordinating office for all students, faculty, and staff coming to KGU or going abroad. CIEC actively promotes cooperation with international organizations such as the United Nations Volunteers sending student volunteers each year to developing countries in order to support development in various areas. KGU is the first Japanese university to carry out this project. All administrative, academic and private matters regarding exchange students are dealt with through CIEC.

Global Student Network (GS Network)

GS Network is a CIEC student organization supporting all international students including exchange students and promoting understanding among international and local students. The GS Network plans various intercultural events both on and off campus throughout the year, such as field trips to Kobe or Kyoto, and a sports festival.



▲
For details



KG Buddies

"KG Buddies" are KGU degree seeking students who volunteer to support exchange students. They will help exchange students adjust to life in Japan and become their first friends at KGU.

Onsite Orientation

A mandatory orientation of approximately one week will be held at the beginning of each semester, introducing new students to life in Japan and information on KGU. Orientation Support Team (OST) members help exchange students start their life in Japan with ease.

Medical and Mental Support

Studying abroad can place significant physical and mental stress on students, and symptoms of pre-existing conditions may reoccur in this new environment. To ensure a safe and healthy study abroad experience, please consult with your primary physician before departure regarding your current health conditions or medical history.

KGU Health Care Center

The KGU Health Care Center provides services in 2 different specialties and also has a referral service to major hospitals and clinics in the area. As members of the KGU community, exchange students have access to these services in the event of illness or injury.

KGU Counseling Room

The KGU Counseling Room provides Japanese and English counseling to the entire KGU community, free of charge. Exchange students can make an appointment by email to discuss anxiety related to their study abroad or daily life. All counseling discussions are strictly confidential to protect the students' privacy.



Clubs and Circles



Exchange students are strongly encouraged to join student clubs or circles as this is the main method of connecting with Japanese students. The clubs or circles focus on a wide variety of activities from intramural sports to martial arts to music appreciation, calligraphy and wearing kimono. In principle, clubs tend to set stricter regulations than circles as some clubs compete in national championships representing KGU and require to meet daily for 2 to 4 hours.

Exchange students who wish to join a club are urged to consider their time commitment and allocation in order to secure enough study time.

Example of KGU Student Clubs

Cultural Clubs and Circles

- Calligraphy ● Japanese Flower Arrangement
- Tea Ceremony ● Mixed Chorus etc.

For details (Japanese language only)



Athletic Clubs and Circles

- Kendo ● Sumo ● Hula Dance
- Volleyball ● Capoeira ● Fencing etc.

Theater Club

Deniss
Latvia University
Latvia



"I visited three different clubs and decided to join the Theater Club as it was the most welcoming to me.

We usually met three times a week. Apart from performance rehearsals, most of what we did felt like games and through these, we forged a great bond while also practicing acting skills.

One of the biggest difficulties from the start was the language barrier as nobody could speak English. Luckily, my Japanese, though still basic, was good enough so we could understand each other to some extent. We are talking about the theater club after all – gesturing while explaining is what they do.

I first helped the club with stage and decoration preparations but as I got more comfortable, I tried my hand at acting for one of the yearly performances. I worked really hard on my acting part as I had to not only remember the lines of my character but act accordingly as well.

Having a quiet voice and personality did not help but thankfully it went well.

I am glad I joined the Theater Club during my stay in KGU. This whole experience was a great opportunity to gain a better understanding of Japanese people. It also provided me with some Japanese speaking and listening practice. I had lots of fun during preparations, before and after performances, and I will bring back all those memories home with me."

Sumo Club

Nicolai
Friedrich-Alexander University
Erlangen-Nurnberg
Germany



"As I came to the Sumo Club room for the first time, I told the members in very bad Japanese – at this time I couldn't speak at all – that I wanted to join. Thanks to the kind and caring Sumo Club members, a week later, I was quite a normal member.

I got my own Mawashi, the traditional Sumo Wrestler pants, and joined practice four times a week, which always started with some warming workout related to the special way Sumo Wrestlers' move. I always got a good explanation of what to do, even though their English was very limited. Once we were done with workout, we would fight each other. I am grateful that the regular members always held back when fighting me as I was a beginner. I was so involved in the club that I even entered three tournaments during my time there.

Outside of practice, Sumo Club members would often hang out together. From outing before the tournaments to home parties during which members would make Chanko Nabe, the traditional Sumo Wrestler Soup/Stew, from scratch for me, it was always a lot of fun.

Joining a club or circle can make your study abroad into an experience you will never forget.

I strongly recommend you look for a good match."

Training Center



The Training Center is the university gym available to all university students. This facility is equipped with free weights and exercise machines such as stationary bicycles, treadmills and stepmills. Mats, balance balls, and other equipment are also provided in the conditioning room. Training staff are available for personal training advice.



Europe

■ Austria

Fachhochschule Kufstein Tirol-University of Applied Sciences
University of Innsbruck

■ Belgium

Catholic University of Louvain
Ghent University

■ Czech Republic

Masaryk University
University of Ostrava
University of Pardubice

■ Denmark

Aarhus University
University of Southern Denmark

■ Finland

Metropolia University of Applied Sciences
University of Vaasa

■ France

Burgundy School of Business
Grenoble Ecole de Management
Lumiere University of Lyon 2
Normandy Business School
Sciences Po Lyon
The Institute of Political Sciences Saint-Germain-en-Laye
University of Lille
University of Montpellier
University of Paris Cite

■ Germany

European University Viadrina
Friedrich-Alexander University of Erlangen-Nurnberg
Heinrich Heine University Dusseldorf
Hochschule fur Technik und Wirtschaft in Berlin
University of Applied Sciences (HTW Berlin)
Johannes Gutenberg University Mainz
Julius Maximilians University Wurzburg
Ruhr University Bochum
University of Augsburg
University of Bremen
University of Cologne
University of Mannheim
University of Regensburg
University of Siegen

■ Hungary

The University of Pecs

■ Iceland

University of Iceland

■ Ireland

Dublin City University

■ Italy

Ca' Foscari University of Venice
Sapienza University of Rome
University of Bergamo
University of Bologna
University of Parma

■ Latvia

University of Latvia

■ Lithuania

Vytautas Magnus University
Kaunas University of Technology

■ Netherlands

Avans University of Applied Sciences
Hanze University of Applied Sciences Groningen
Radboud University Nijmegen
The Hague University of Applied Sciences

■ Norway

Norwegian University of Science
and Technology
University of Oslo

■ Poland

Cracow University of Economics
University of Lodz

■ Portugal

University of Lisboa

■ Romania

Transilvania University of Brasov

■ Russia

National Research University,
Higher School of Economics

■ Spain

Autonomous University of Barcelona
Pompeu Fabra University
University of Alicante

■ Sweden

Linkoping University
Linnaeus University
Malardalen University
Stockholm University

■ Switzerland

Eastern Switzerland University of Applied Sciences

■ U.K.

Cardiff University
De Montfort University
Keele University
The University of Birmingham
The University of Manchester
University of Edinburgh
University of Essex
University of Hertfordshire
University of Lancashire
University of Leicester
University of London
School of Oriental and African Studies (SOAS)
University of Stirling
York St John University

Learn about Japan with us!



Middle East

■ Turkey

Kocaeli University

Asia

■ China

Fudan University
Jilin University
Renmin University of China
Shanghai Jiao Tong University
Shanghai University
Sichuan University
Soochow University
Sun Yat-Sen University
The Chinese University
of Hong Kong, Shenzhen

■ China / Hong Kong

Hong Kong Baptist University
The Chinese University of Hong Kong
University of Hong Kong

■ China / Macau

University of Macau

■ India

OP Jindal Global University
Parul University
RK University

■ Indonesia

Padjadjaran University
Petra Christian University
Satya Wacana Christian University
University of Indonesia



Partner Institutions

as of January 2026





North America

■ Canada

Huron University College at Western University
King's University College at Western University
Memorial University of Newfoundland
Mount Allison University
Queen's University
Simon Fraser University
University of British Columbia
University of Calgary
University of Guelph
University of Toronto / Victoria University
University of Victoria, Peter B. Gustavson School of Business

■ U.S.A.

California State University, Stanislaus
Central Washington University
Drake University
Emory University
Florida State University
Goucher College
Hamline University
Hendrix College
Nazareth College
Nebraska Wesleyan University
North Carolina State University
Ohio Northern University
Pitzer College
Presbyterian College
San Francisco State University
San Jose State University
Southern Methodist University
Stetson University
Texas A&M University
The University at Albany, State University of New York
Trinity University
University of Massachusetts, Amherst
University of Missouri
University of Nebraska at Kearney
University of Nebraska at Omaha
University of Nevada, Reno
University of New Mexico
University of North Carolina at Chapel Hill
University of the Pacific
Washington and Jefferson College
Whitworth University

Oceania

■ Australia

Adelaide University
Curtin University
James Cook University
La Trobe University
Macquarie University
Murdoch University
Southern Cross University
The University of Newcastle
University of New South Wales
University of Queensland
University of Sydney
University of Technology Sydney
University of Western Australia
University of Wollongong

■ New Zealand

The University of Waikato
University of Canterbury



The University at Albany, State University of New York

Eligibility

**In order to attend KGU
as an exchange student,
a student must:**

be registered as a full time student at one of KGU's partner institutions. Participating students will be selected by the home institution. KGU reserves the right to make final decisions on the admission of students nominated for the student exchange program.

Central and South America

■ Argentina

University of Austral

■ Brazil

Rio de Janeiro State University
University of Sao Paulo

■ Colombia

EAFIT University

■ Mexico

University of Monterrey

Consortiums

ACUCA (Association of Christian Universities and Colleges in Asia)
MISEN (Methodist International Student Exchange Network)
UMAP (University Mobility in Asia and the Pacific)
USAC (University Studies Abroad Consortium)



■ Korea

Catholic University of Korea
Chung-Ang University
Dongguk University
Ewha Womans University
Hannam University
Hanyang University
Kangwon National University
Konkuk University
Korea University Sejong Campus
Kyung Hee University
Methodist Theological University
Pusan National University
Sungshin Women's University
Sogang University
University of Seoul
Yonsei University

■ Malaysia

Taylor's University
University of Malaya
University Sains Malaysia
University Tunku Abdul Rahman

■ Philippines

Ateneo de Manila University

■ Singapore

Nanyang Technological University
National University of Singapore

■ Taiwan

Fu Jen Catholic University
National Cheng Kung University
National Chengchi University
National Taipei University
National Taipei University of Education
National Taiwan Normal University
National Taiwan University
National Yang Ming Chiao Tung University
Soochow University
Tamkang University
Tunghai University

■ Thailand

Assumption University
Chulalongkorn University
Mahidol University International College
Payap University
Rangsit University

■ Vietnam

Foreign Trade University
Thuongmai University

Contemporary Japan Program Academic Schedule

2026 Fall Semester

(Tentative)

Designated Arrival Day	▶ Early September
Orientation Week	▶ Mid-September
First Day of Classes	▶ Late-September
Winter Break	▶ From December 24 to January 5
Last Day of Classes/ Examination (except IBA courses)	▶ Mid-January
KGU Accommodation Moving-Out Day ※	▶ January 19
Last Day of Classes/Examination (IBA courses)	▶ February 7
Official Grade Transcript Issuance Date	▶ Early March

※ Extensions possible for exchange students taking IBA courses.

Winter Intensive Period 2027

The Winter Intensive Period is offered only to full year students starting in the Fall Semester. Students cannot apply for the Winter Intensive Period only. (Tentative)

First Day of Classes	▶ Late January
Last Day of Classes	▶ Late February

2027 Spring Semester

The academic calendar for the 2027 Spring Semester will be finalized in November 2026. (Tentative)

Designated Arrival Day	▶ Mid-March
Orientation Week	▶ Late March – Early April
First Day of Classes	▶ Early April
Last Day of Classes/ Examination (except IBA courses)	▶ Mid-Late July
KGU Accommodation Moving-Out Day ※	▶ July 21
Last Day of Classes/Examination (IBA courses)	▶ Late July
Official Grade Transcript Issuance Date	▶ Early September

※ Extensions possible for exchange students taking IBA courses.

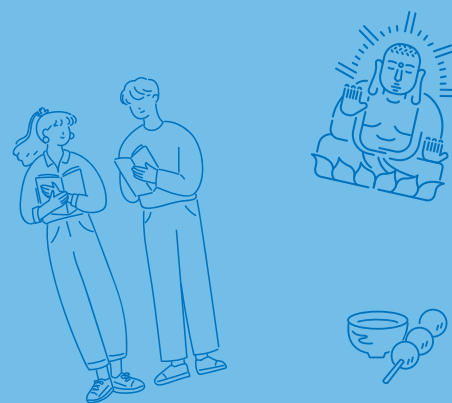
Every year, KGU is chosen as the place to pursue their studies on an exchange program by hundreds of students from partner universities around the world. If you are interested in joining us, please consult the below page and contact your International Office for details on how to access the 2026-2027 Contemporary Japan Program application forms.

<https://ciec.kwansei.ac.jp/study/exchange>

Application Deadline

All application materials must be received by KGU no later than the following deadline:

- 2026 Fall Semester Intake April 15, 2026
- 2027 Spring Semester Intake November 15, 2026

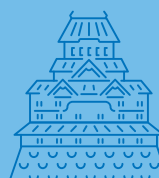
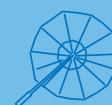


せやねん



関西学院大学
KWANSEI GAKUIN UNIVERSITY

Center for International Education
and Cooperation (CIEC)
Organization for Worldwide Collaboration (OWC)
1-155 Uegahara Ichiban-cho, Nishinomiya,
Hyogo 662-8501 JAPAN
TEL. +81-798-54-7374, FAX. +81-798-51-0954
Email: incoming@kwansei.ac.jp



よ31く

Contemporary Japan Program

現代日本プログラム 2026-2027